



Tualatin Historical Society Newsletter

SEPTEMBER/OCTOBER 2010

*Founded in 1986, the Society's mission is
to preserve, promote and interpret the rich and colorful history of Tualatin*

Save the Date...

Join us for the popular
“**Riding the Rails**” excursion. This time our travel via WES takes us to Historic Beaverton. This all day adventure takes place on **September 30, 9:00-4:00pm**, led by THS member, Karin Olson.

Tentative schedule:

9:00: Leave Tualatin on WES

9:30: Arrive Beaverton Transit Center walk to Beaverton History Center

10:00: walking tour of Historic Old Town Beaverton, led by Bev Ecker

11:30: Lunch on own in one of the many area restaurants

12:30: Tour of Beaverton History Center, led by Bev and a talk by Lynda Myers on Beaverton history.

3:00: Coffee and pastry at Beaverton Bakery

3:45: Walk back to Beaverton Station and back to Tualatin by 4:30pm.

Call 503.885.1926 to sign up. Deadline to sign-up is September 28. All day fare on WES is \$4.75 or use senior discount book of tickets.

Former Governor Victor Atiyeh to Speak September 1

Former Oregon Governor Victor Atiyeh will speak at the Tualatin Historical Society meeting Wednesday, September 1 at 1:00 pm. The title of his remarks will be “Whatever Happened to the Last Republican Governor” which covers a lot of territory, Atiyeh said. Atiyeh was governor from 1979 to 1987. A panel of THS members will ask questions.

Known primarily as a public servant, in actuality he grew up in the family carpet business serving as president of the firm after his father died. He resigned after being elected governor. He now serves as an international trade consultant.

Although a Republican, he has credibility on both sides of the political aisle and has personally known many presidents since Richard Nixon, including President Clinton with whom he served as a fellow Governor from 1979 to 1983.

He served as Governor during a national recession in the early 1980s which was especially difficult for Oregonians. During that era, Governor Atiyeh led recruiting the first wave of Asian companies to invest and create jobs in Oregon. He made nine trips to Japan which resulted in Seiko, Epson, NEC, Fujitsu building their businesses in the state.

Early interest in history led him to serve as President of Multnomah Muzzle Loading Rifle Association; Oregon Historical Society Board, Washington County Historical Society Board, Oregon Wildlife Heritage Foundation, Boy Scouts of America, Japan America Society of Oregon; Commission on Indian Services, World Affairs Council. He was class president of Washington High School in 1941 where he was All City Football Guard and captain of the football team.



Photo above: Vic Atiyeh enjoys the early edition of The Oregonian in 1978 when he won the general election. ~ photo from Wes Guderian/ The Oregonian

What's Going on Here?

by Yvonne Addington
THS President



Photo above: Governor Victor Atiyeh appoints Yvonne Addington to Chair the Oregon State Speed Control Board in about 1975. Board set all city and state speed zones on all streets in State. In 1983, the Governor appointed Addington to be Oregon's first Community Development Block Grant Manager. Governor Atiyeh speaks to the Tualatin Historical Society and public on September 1.

What's Going on Here?

Thanks to a \$5,000 grant from the Washington County Visitors Association, we have hired an internationally-known consultant (and Tualatin resident) to help us market Tualatin's unique Ice Age history and our THS artifacts in particular. In this process we are talking with the Ice Age Institute/Columbia River Chapter, Portland State University, U of O and others to advance the public knowledge of the pre-historic era in the Tualatin River Valley at the end of the Ice Age (about 14,000 years ago) when mastodons, mammoths, sloths and ancient bison roamed the Tualatin area and many floods, sometimes 350' deep, brought glacial ice bergs with granite rocks (erratics) into our valley and throughout the Willamette Valley. The consultant's report will be available soon.

Along this line, THS, the City and the Ice Age Institute will also sponsor a public lecture regarding the Ice Age in Tualatin at the Tualatin Library on **Wednesday, September 15 at 7 pm**. Speaker will be Rick Thompson, local authority on the Lake Missoula Floods in our region. His depiction of Lake Allison covering Tualatin hangs above the water cooler at the Heritage Center. We anticipate a crowd

like Dr. Scott Burns attracted so we have moved the location to the larger public room **at the Library**. Retired firemen and those related to the fire fighting community are just about finished with interviews to document Tualatin Fire Department and Tualatin Rural Fire Protection District history. They will begin selecting key pictures and articles among the hundreds of photos, stories, incidents, etc to be used for publication, hopefully early next year. Next project will be the history of Tualatin police protection. Let me know if you are interested in this project.

Now is the time to let us know if you are interested in serving as an officer or a Board of Directors member for the Tualatin Historical Society. We deal in a number of administrative issues in connection with operation of the Tualatin Historical Society, Tualatin Heritage Center, City issues involving historic preservation, advancing historic interpretive signs and parklands, trails, monuments, buildings, etc. All 10 board members serve one year terms. Officers are President, Vice President, Secretary, Treasurer, Historian. In addition, there are 5 general board of director positions, including the Heritage Center Director. A nomination committee will be appointed soon and the election is held at the annual November membership meeting. Let me know if you are interested and I will forward your name to the nomination committee. We invite all people interested in historic preservation and a very active board agenda to join in.

At the Crawfish Festival, we enjoyed working with the Tigard Historical Association and the Sherwood Historical Society to display their collections of Tigard and Sherwood high school yearbooks (back to 1933!). In addition, we displayed our own collection of school class pictures of the Tualatin Elementary School that opened in 1949 and closed in 2004, plus many older photos of classes back to 1900.

Thank you to so many people who are constantly helping to preserve our local history by participating in our Society and also to those who help with special events such as the fun Wine Tasting and Auction September 17 and Harvest Festival September 25.

~Yvonne

Harvest Season in Old Tualatin

By Barbara Koch Kern

This article is taken from a talk Barbara gave at a Society program 10 years ago describing the many tasks involved in running a family farm in early Tualatin. Barbara moved to Tualatin in 1938 with her parents, Sam and Ruby Koch, and siblings Shirley, Lloyd and Kay, where they operated a 40-acre farm on Tualatin-Sherwood Rd. Lloyd continued on the farm until last year when the property was sold for industrial development. In this excerpt Barbara describes how the fields were threshed and how the hungry workers were fed.

The grain was cut with a binder, which was a machine pulled by horses. The cut grain was made into bundles, tied in the middle with twine, and dropped on the ground. Next was the job of standing up the bundles in shocks. Several stood together like a teepee.

Then it was time to haul the bundles. Someone would walk alongside the horse-drawn flatbed wagon, pick up a bundle with a pitchfork and gently toss it onto the wagon. Another person stacked them several feet high. They were hauled to a designated place where the thresher would be located and stacked again in circles several feet around and several feet high.

The threshing machine was set up with a steam engine or tractor, with a long wide belt hooked up between them. The tractor propelled the threshing machine. Tarps were put down on the ground to catch any loose grain.

Bundles of grain were then tossed into the thresher, where the seeds were shaken out and the straw was blown out, making a straw pile for the protection and feed for the animals in the winter months.

The grain came out of another spout filling the sacks and a worker would sew each sack up.

The sack-sewer sat on two grain-filled sacks for a stool. He used a precut piece of linen string and a

sack needle to sew up the sacks, and with a backward jerk of the needle would cut the string. Another man would carry the sacks some distance and stack them six feet high. Someone else hauled them to the barn.

At noon the men would come in from the field and wash up for the big mid-day dinner. We had a mirror hung on the cherry tree, a bench with an enamel washbasin, a bar of soap, buckets of warm water and a dipper. A towel was hung on the tree with a piece of binder twine. No nails were put in the tree. And a wide-tooth comb for combing hair.

Then into the house for dinner. This is what Mother would prepare for the threshing crew: roast beef or pork, chicken, mashed potatoes, gravy, corn on the cob, green beans, potato salad, sliced tomatoes and cucumbers, home-made bread or biscuits and jam. For dessert: lemon meringue, apple and berry pies. Plus milk, coffee and ice tea. Then the men would take a short rest before going back into the field.

Jugs of lemonade were taken out to the men in mid-morning and mid-afternoon. That was my job.

Then by the 1960s, local farms started disappearing, giving way to housing and industrial development.

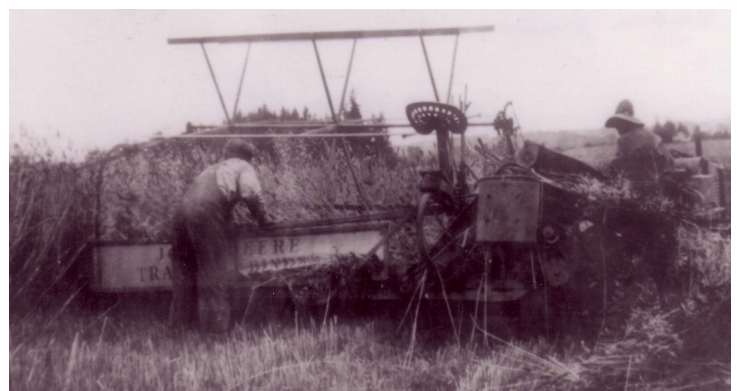


Photo above: Harvest time in early Tualatin was labor intensive, not to mention hot and dusty, but it was how haylofts and grain bins were filled.

**Celebrate the joys of the harvest at the
Society's Harvest Festival
at Lee Farms on September 25.**

The Effects of the Lake Missoula Floods in Our Backyard

How Tualatin and the greater Portland and Willamette Valley were impacted by the cataclysmic Missoula Floods some 14,000 years ago is the focus of a special Ice Age Institute presentation Wednesday, September 15 at Tualatin Library, 7-9 p.m. co-sponsored by Tualatin Historical Society and the City of Tualatin. The program is free to the public.

Rick Thompson specializes in the effects of the Ice Age Floods in the NW Oregon and SW Washington areas. His impressive map of "Lake Allison" which covered our region hangs above the water cooler at the heritage center. He combines his expertise on the path of the floods with his talent of mapping, illustrating and conveying the information in an artistic form that is revealing and easily understood. As many attendees have said after his presentation: "I'll never look at this area the same again."

Rick has led several field trips in the Columbia River Gorge, Portland, Vancouver and the Tualatin and Willamette Valleys. His ten-year study of the land forms of the area has given him a unique comprehension of the flow of the floodwaters and created a new view of several of the geologic formations. He has not only the ability to see these affects but to relay them to others. He has spoken to engineers, hydrologists, geologists, tour guides, symposiums, Rotary clubs and many more. He is also the incoming president of the Lower Columbia Chapter, Ice Age Institute.

For more information call the Tualatin Heritage Center at 503-885-1926. Maps and self-guided tour information will be available for purchase.



Computer rendering of Glacial Lake Missoula courtesy of Oregon Public Broadcasting

Auction Items are Rolling In

That's right! We have been busy procuring donations for the silent auction. They are coming in but we still need more. Any item, large or small is greatly appreciated.

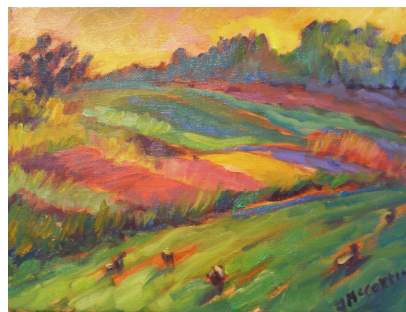
Donations include~



Left: Painting by Brenna White

Below left: Painting by Jackie McCartin

Below right: Necklace by Heidi Marx



Other donations include:

- Beautiful original artwork and jewelry
- Photography package
- Chauffeured wine tour for four people that includes a basket full of snacks
- Private wine class for eight with food pairings
- Various hotel stays including two nights in a jacuzzi suite and Lincoln City
- 1 unit of garden mulch delivered (yup, delivered!)
- Wine & gourmet food basket
- Various restaurant gift certificates
- Interior decorating consultation
- Peplot Painting certificate
- OSU vs. ASU **and** OSU vs. Louisville football tickets
- Watercolor class with Linda Aman
- Judy's cream caramels
- Wine, wine, and more wine and much more!

If this sounds good to you, call Barbara today and reserve your auction tickets at 503.645.1596.1926. To donate call Lindy at 503.885.1926 or email lindy.thc@gmail.com.



Generously donated by Beavermaniac, Norm Parker. Thanks, Norm!

Thank you for your support!

THS Harvest Festival Moves to Real Farm Saturday, September 25



Tualatin’s own Lee Farms will host the 2010 THS Harvest Festival so that visitors can experience the last vestiges of what an actual working farm is like. THS members will create displays and help with demonstrations of early-day chores such as cider pressing, and crafts. Visitors will also receive advice on pie making and home canning.

While many activities will be free, Lee Farms staff will also offer a variety of family entertainment options at varying prices: hayrides, a hay maze, giant slide, giant bounce pillow, pony rides. Families can purchase a book of 25 tickets for these events at \$20.

Also available for sale will be homemade pies, donuts (pumpkin and marionberry) polish dogs, hot dogs, corn dogs, elephant ears, corn on the cob, baked pastries and goods, homemade fudge, caramel apples and more! THS volunteers will offer pie making, canning, and preserving tips.

Entrance and parking are free. Visitors will be able to see (and sometimes touch) baby chicks and chickens, puppies, goats, rabbits, calves, pigs and horses.

Bring your grandchildren!



Demonstrations planned include cider pressing (*photo left: Scott Judy presses apples at the 2009 Harvest Festival*), wool spinning, lace making, quilting. Old time farm equipment and implements will also be displayed.



Lee Farms, on 65th Avenue (formerly Meridian Road) represents the seventh generation of family farming in Tualatin.

Heritage Center Patio Brick Update

from Christine Tunstall

Due to the continuing requests for bricks, we will be etching and installing more bricks soon. If you wish to order a brick, please send an order form and \$50. There will be two bricks available for bidding at the September 17 Annual Wine, food and Silent Auction fundraiser.



The THS board will honor the Garden Corner with a 8 x 8 brick for their continuing contributions to the patio garden.

Each year they have supplied two beautiful baskets. This year they are filled to overflowing with purple petunias. Jon also donated 40 flats of annuals that were quickly planted. Thanks to Larry, Barbara, Rochelle, Del, and Chris for planting! Please take a stroll along the flower gardens on each side of the patio, what the 4th graders planted in May, and enjoy the beautiful plants!

Get “WOW”ed, and See the Show

Women Of Watercolor (WOW!) a group of contemporary watercolorists will have their debut art show and sale entitled “Painting Our Passion” on September 24 and 25 at the Tualatin Heritage Center. The show will feature the extraordinary talent of students of Linda Aman and includes numerous award-winning pieces of artwork. Meet the artists at a reception from 6:00pm to 10:00pm on the 24th or just come to view art on the 25th from 10:00am to 9:00pm.

For more information about the show or WOW, call Angela Wrahtz at 503.692.5123 or Mary Holt at 503.702.7145





Join us for Wine, Food and Silent Auction

Friday, September 17, 6:00 pm

Buy your ticket today!



Enjoy the sounds of Island Trio

DATE: FRIDAY, 9/17/10

TIME: 6:00-9:00 PM

**Where:
Tualatin Heritage Center
8700 SW Sweek Drive
Tualatin, OR 97062**



You are invited to attend our Second Annual Wine, Food and Silent Auction fundraiser. Help us continue with the Society’s mission “to preserve, promote, and interpret the rich and colorful history of Tualatin”.

Your attendance and donations will enable us to:

- Work to save endangered historic sites and buildings
- Present monthly programs with guest speakers
- Collect and archive historic photos
- Put on special historical events
- Maintain a garden of heirloom plants
- Identify important sites with markers, like the Willamette Meridian Marker, Ice Age Evidence
- Sponsor historical, cultural, civic and environmental classes and workshops

In addition to an array of intriguing auction items, you will find the following activities:

- Taste some fabulous Northwest wines
- Non-alcoholic beverages
- Enjoy scrumptious hors d’oeuvres and desserts
- Wall of Wine - wine bottle grab bag
- Raffle drawing
- Enjoy music by Island Trio

We have only **120** tickets available, so get yours today. Tickets are \$25 each and may be purchased by phone Barbara (503.645.1596) or email lindy.thc@gmail.com.

www.tualatinhistoricalsociety.org



Heritage Center September Event Calendar

Tualatin Historical Society Monthly Program September 1, 1:00 pm

“Whatever Happened to the Last Republican Governor” with former Governor Victor Atiyeh whose leadership helped shape Tualatin’s growth years. For information, call 503.885.1926.

Dragonfly Program

September 1, 7:00 – 8:30 pm

Join us for a fascinating look at dragonflies and damselflies. Jim Johnson, photographer and dragonfly enthusiast will present the evening program. For information, call the Wetlands Conservancy 503.691.1394.

Pilates Floor Class

September 2, 9, 16, 23, 11:30 am–12:30 pm

Beginners and intermediate welcome. \$10 drop-in per class, \$8 per with 10 class pass. Bring yoga mat. To sign-up, call Barbara at 503.939.5800.

Knitting and Crochet Workshop

September 10, 10:00-12:00 pm

Bring your project or start one. Help is available. All levels welcome.

Nature & Birdwalk

September 8, 8:00 am

Join the Wetlands Conservancy for a short walk around Sweek Pond. Call 503.691.1394 for information.

Old-timers Coffee

September 10, 10:00 am-Noon

Enjoy coffee, treats and fellowship.

Dulcimer Jam

September 12, 1:00-3:00 pm

Donations welcome.

Wine Tasting, Food, & Silent Auction

September 17, 6:00 – 9:00 pm

Fund-raising event for Tualatin Historical Society. Enjoy the sounds of Island Trio, taste Northwest wines, delicious food, and silent auction, \$25 per person. For information, call 503.885.1926.

Women of Watercolor Art Show & Sale

September 24, noon–10:00 pm & 25, 10:00 am–8:00 pm

See details on page 5.

~September calendar continued

Harvest Festival at Lee Farms

September 25, 9 am-6 pm

See farm life in action with activities for all ages. Extra costs for entertainment such as pony and hayrides. Demonstrations from 10:00-3:00 pm, including lace making, tips on pie making, home canning; sign up for knitting and square/folk dancing opportunities this fall. Sponsored in part by the Tualatin Historical Society .

“Ride the Rails”

September 30, 9:00—4:00 pm

See page 1 for details.

Heritage Center October Event Calendar

Knitting and Crochet Workshop

October 1 & 22, 10:00-12:00 pm

Bring your project or start one. Help is available. All levels welcome.

Pilates Floor Class

October 7, 14, 21, 28, 11:30 am–12:30 pm

Beginners and intermediate welcome. \$10 drop-in per class, \$8 per with 10 class pass. Bring yoga mat. To sign-up, call Barbara at 503.939.5800.

Tualatin Historical Society Monthly Program

October 6, 1:00 pm

Program to be announced

Check the website for update.

Nature & Birdwalk

October 6, 8:00 am

Join the Wetlands Conservancy for a short walk around Sweek Pond. Call 503.691.1394 for information.

Old-timers Coffee

October 8, 10:00 am-Noon

Enjoy coffee, treats and fellowship.

Dulcimer Jam

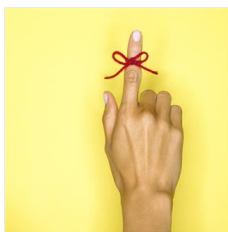
October 10, 1:00-3:00 pm

This month at the Pohl Center.

Donations welcome.

Just a reminder...

~ Please remember to park in the designated Heritage Center side of the Tualatin Police parking lot. We know that there are instances when that is not possible when the lot is full and you have to park outside of the designated area. But try to park there first or in a city lot. Your cooperation is greatly appreciated.



~ The Tualatin Heritage Center will be closed on Monday, September 6 in observance of Labor Day.

One more thing...

ありがとうございます。



Thank you, volunteers!
We appreciate you.

THS Fundraiser Needs You!



We are looking for volunteers to help us with our major fundraiser. We have a wide variety of tasks from set-up & decorations, food prep, accounting, cashiering to clean-up and everything in between. Please call Lindy at 503.885.1926 or email lindy.thc@gmail.com if you can help.

Your 2010 Tualatin Historical Society Board

Executive Board:

- President Yvonne Addington
- Vice-President Christine Tunstall
- Past President Norm Parker
- Secretary Doris Gleason
- Treasurer Barbara Stinger

Directors:

- Adrienne Heathman
- Newsletter Editor & Center Director- Larry McClure
- Art Sasaki
- Historian - Rochelle Smith
- Honorary Board Members:*
- Loyce Martinazzi and Karen Lafky Nygaard

Website - Lindy Hughes, See our current and past newsletters in color and other articles of interest at www.tualatinhistoricalsociety.org.

Tualatin Heritage Center
Tualatin Historical Society
8700 SW Sweek Drive
Tualatin, OR 97062
Phone: 503.885.1926 Fax: 503.692.5876



The Center is open to the public weekdays from 10am to 2pm. The Tualatin Historical Society holds open program meetings in the Center at 1:00 pm on the first Wednesday of each

Corrections:

The Tualatin Historical Society strives to be accurate, fair and complete in its coverage, and corrects significant errors of fact. If you see an error in the newsletter, please call 503.885.1926 or email us at larry.mcclure@gmail.com or lindy.thc@gmail.com. Thank you.

Tualatin Historical Society
P.O. 1055
Tualatin, OR 97062